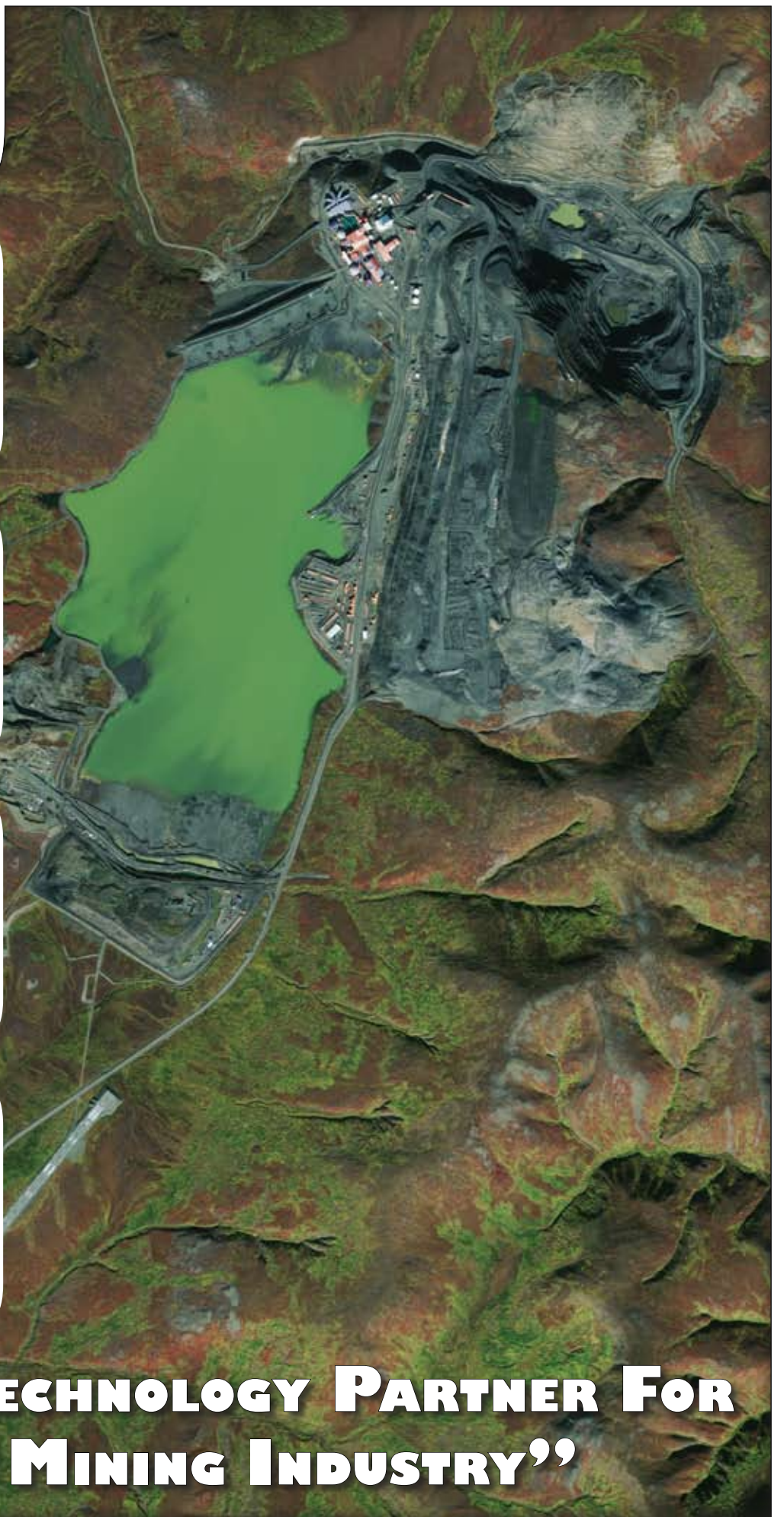


elerra™

GIS DATABASE CAD

bringing technology down to earth



**“YOUR TECHNOLOGY PARTNER FOR
THE MINING INDUSTRY”**

○ **HIGH RESOLUTION SATELLITE IMAGERY SALES (ALL CIVILIAN SATELLITES)**

E-Terra has a large archive of high-resolution imagery through its partnerships with all the commercial global data providers. Resolutions range from 40cm to 10 meter pixel resolution.

○ **AERIAL AND TERRESTRIAL PHOTOGRAPHY AND PHOTOGRAMMETRY**

E-Terra provides many digital photography services from multiple platforms including: plane, helicopter and remote control vehicle.

- Aerial Photogrammetry / Digital Terrain Models
- Project Documentation and As-Built CAD Technology

○ **IMAGERY ANALYSIS (VEGETATION ANALYSIS, LAND CLASSIFICATION AND CHANGE DETECTION)**

E-Terra employs experienced imagery specialist who can create thematic map products from multi-spectral imagery to support land classification, environmental monitoring and change detection of a project area.

○ **MAPPING AND GEOGRAPHIC INFORMATION SYSTEM SERVICES**

E-Terra has provided GIS and spatial data integration services in Alaska since 1993. We have the knowledge and data integration skills to create spatial data and computer aided design workflows to support any organization's custom mapping, document management and workflow management needs.

E-Terra is a registered developer and integrator for Autodesk and ESRI.

○ **DATABASE DEVELOPMENT**

Many private companies and government agencies have called on E-Terra to provide database development and support services for desktop, web, and enterprise level projects. E-Terra provides complete database design, data modeling, implementation, and support services to ensure that your critical data is accurate, secure, and available to support your project.

○ **SPATIAL DATA DEVELOPMENT FOR LITIGATION AND LEGAL SUPPORT**

E-Terra's precision spatial data and database skills have been called upon to create a variety of precise visual products to support legal and court proceedings.

○ **WEB DEVELOPMENT AND DATABASE DESIGN**

Every project and company relies on the internet to market, coordinate internally, or communicate with the world. E-Terra has the creative and technical talents to create everything from simple cost effective web solutions for a project announcement to a data driven corporate portal for the entire enterprise.

○ **REMOTE ASSET MONITORING / WIRELESS INTEGRATION**

Do you need to track your assets or monitor instruments and facilities in the field? E-Terra has developed interfaces to many communication devices and sensors to integrate with corporate web portals for monitoring or notifying people of asset and alarm status in a timely manner. E-Terra has pioneered Location Based Services and asset tracking on a global level.